

## ORGANISATION - LOGISTICS

>> Pitbox allocation will be uploaded to our GEDLICH Racing mobile app <<

### FOR DRIVERS

#### LIABILITY WAIVER

Sign the liability waiver if you participate in the tests on Thursday and Friday (**OBLIGATORY**)

LIABILITY WAIVER  
SIGN ONLINE

### FOR TEAMS

#### Paddock SPACE

For **GT4WS** teams - Fill out this form to request paddock space **or** if you are a PTWS, GTWS/ FWS team and need additional paddock space.

Paddock SPACE  
ORDER FORM

#### CATERING

Catering and hospitality provided by MicFood in the Paddock, offering lunch and dinner. Fill out the catering order form to request catering.

CATERING ORDER FORM  
BY MICFOOD

#### HOTEL SPECIALS

For special, personalized deals at hotels around the circuits, contact [bastien@revolugo.com](mailto:bastien@revolugo.com). For other hotel specials, click the button.

HOTEL SPECIALS  
BY REVOLUGO

#### TRUCK PARKING

Request a parking spot for your truck before or after events. Most circuits offer secure parking for your truck(s) and cars. Fill out the form.

TRUCK PARKING  
CIRCUITS / LOCATIONS

#### PHYSIOTHERAPIST

**TIP!**

A sports physiotherapist will be on site:  
[physiotherapy.sch@icloud.com](mailto:physiotherapy.sch@icloud.com)  
+49 174 170 911 2

PHYSIOTHERAPIST  
BOOK NOW

**SPORTING INFO / DOCUMENTS**



**GENERAL**

**GENERAL DOCUMENTS**  
GT WINTER SERIES

**DRIVER NOMINATION**  
TO BE HANDED IN UNTIL BRIEFING

**LIVESTREAM**  
CLICK HERE TO GO TO CHANNEL

**PHOTO GALLERY**  
CLICK HERE TO GO TO GALLERY

**EVENT SPECIFIC**

**IMPORTANT DOCUMENTS**  
WINTER SERIES MOTORLAND

**GT3 BOP**  
COMING SOON

**LIVETIMING**  
TAP HERE FOR LIVETIMING

**TIMING RESULTS**  
TAP HERE FOR TIMING RESULTS

**ORDER FORMS**

**MANDATORY**



**PANTA RACING FUEL**

**MANDATORY FOR GT3 CARS**



**DATA LOGGER**



**PIRELLI TYRES**



**MICHELIN TYRES**



**TIMING DATA STREAM**



**PFC BRAKES**

**TIME TABLE**

**WED 28 FEB: SET UP**

START	END	DURATION	SESSION	INT
09:00	18:00	09:00	GT4 Winter Series Paddock access	
09:00	18:00	09:00	Prototype Winter Series Paddock access	
09:00	18:00	09:00	Formula Winter Series Pitbox access	
09:00	18:00	09:00	GT Winter Series Pitbox access	

**THU 29 FEB: TEST DAY 1**

START	END	DURATION	SESSION	INT
09:00	09:55	00:55	GT4 Winter Series Private Practice	00:05
10:00	10:50	00:50	Formula Winter Series Collective Test	00:05
10:55	11:50	00:55	Prototype Winter Series Private Practice	00:05
11:55	12:55	01:00	GT Winter Series Private Practice	00:00
12:55	13:55	01:00	Lunch Break	00:00
13:55	14:45	00:50	Formula Winter Series Collective Test	00:05
14:50	15:50	01:00	GT4 Winter Series Private Practice	00:05
15:55	16:55	01:00	Prototype Winter Series Private Practice	00:05
17:00	18:00	01:00	GT Winter Series Private Practice	

**THU 29 FEB: TEAM MANAGER BRIEFING**

16:00	16:30	00:30	Formula Winter Series	00:15
-------	-------	-------	-----------------------	-------

## TIME TABLE

### FRI 1 MAR: TECHNICAL SCRUTINEERING

**MANDATORY**

START	END	DURATION	SESSION	LOCATION
10:00	18:00	07:00	GT4 Winter Series	Technical Boxes
10:00	18:00	07:00	GT Winter Series	Technical Boxes
10:00	18:00	07:00	Prototype Winter Series	Technical Boxes
15:00	17:00	02:00	Eurocup 3	Technical Boxes
17:00	19:30	02:30	Formula Winter Series	Technical Boxes

**DETAILED TIMESLOTS FOR GT- AND PROTOTYPE CARS WILL BE POSTED IN THE APP**

### FRI 1 MAR: TEAM MANAGER BRIEFING

START	END	DURATION	SESSION	INT
14:00	14:30	00:30	Prototype Winter Series	
13:00	13:30	00:30	GT4 Winter Series	
15:30	16:00	00:30	GT Winter Series	

**MANDATORY**

### FRI 1 MAR: DRIVERS BRIEFINGS

START	END	DURATION	SESSION	INT
12:00	12:30	00:30	Formula Winter Series	00:15
16:00	16:30	00:30	Prototype Winter Series	
17:00	17:30	00:30	GT4 Winter Series	00:15
18:45	19:15	00:30	GT Winter Series	

## TIME TABLE

### FRI 1 MAR: ACCREDITATION + DOCS

**MANDATORY**

START	END	DURATION	SESSION	LOCATION
09:00	17:30	08:30	Formula Winter Series	GR Office Control Tower
09:00	17:30	08:30	GT Winter Series	GR Office Control Tower
09:00	17:30	08:30	GT4 Winter Series	GR Office Control Tower
09:00	17:30	08:30	Prototype Winter Series	GR Office Control Tower

### FRI 1 MAR: TEST DAY 2

START	END	DURATION	SESSION	INT
09:00	09:50	00:50	Formula Winter Series Collective Test	00:05
09:55	10:40	00:45	GT4 Winter Series Private Practice	00:05
10:45	11:35	00:50	Formula Winter Series Collective Test	00:05
11:40	12:20	00:40	GT4 Winter Series Private Practice	00:00
12:20	13:20	01:00	Lunch Break	00:00
13:20	14:10	00:50	Formula Winter Series Collective Test	00:05
14:15	15:10	00:55	GT Winter Series Private Practice	00:05
15:15	15:55	00:40	GT4 Winter Series Private Practice	00:05
16:00	16:50	00:50	Formula Winter Series Collective Test	00:05
16:55	17:55	01:00	GT Winter Series Private Practice	00:05
18:00	20:00	02:00	Prototype Winter Series Private Practice	

### SAT 2 MAR: DRIVERS BRIEFING

**MANDATORY**

08:00	08:30	00:30	Eurocup 3
-------	-------	-------	-----------

## TIME TABLE

### SAT 2 MAR: RACE DAY 1

START	END	DURATION	SESSION	INT
09:00	09:30	00:30	Eurocup 3 Free Practice 1	00:10
09:40	10:00	00:20	GT4 Winter Series Free Practice	00:10
10:10	10:30	00:20	Formula Winter Series Qualifying 1	00:10
10:40	11:00	00:20	Formula Winter Series Qualifying 2	00:10
11:10	11:30	00:20	GT Winter Series Free Practice	00:10
11:40	12:00	00:20	Prototype Winter Series Free Practice	00:10
12:10	12:40	00:30	Eurocup 3 Free Practice 2	00:10
12:50	13:05	00:15	GT4 Winter Series Qualifying 1	00:05
13:10	13:25	00:15	GT4 Winter Series Qualifying 2	00:10
13:35	13:50	00:15	GT Winter Series Qualifying 1	00:05
13:55	14:10	00:15	GT Winter Series Qualifying 2	00:10
14:20	14:35	00:15	Prototype Winter Series Qualifying 1	00:05
14:40	14:55	00:15	Prototype Winter Series Qualifying 2	00:10
15:05	15:20	00:15	Eurocup 3 Qualifying 1	00:10
15:30	15:45	00:15	Eurocup 3 Qualifying 2	00:10
15:55	16:10	00:15	Formula Winter Series Grid Procedure	00:00
16:10	16:45	00:30 + 1 Lap	Formula Winter Series Race 1	00:10
16:55	17:10	00:15	GT4 Winter Series Grid Procedure	00:00
17:10	17:40	00:30	GT4 Winter Series Race 1	00:10
17:50	18:05	00:15	GT Winter Series Grid Procedure	00:00
18:05	18:35	00:30	GT Winter Series Race 1	00:10
18:45	19:00	00:15	Prototype Winter Series Grid Procedure	00:00
19:00	20:00	00:50 + 1 Lap	Prototype Winter Series Race 1	

## TIME TABLE

### SUN 3 MAR: RACE DAY 2

START	END	DURATION	SESSION	INT
08:45	09:00	00:15	Eurocup 3 Grid Procedure	00:00
09:00	09:35	00:30 + 1 Lap	Eurocup 3 Race 1	00:10
09:45	10:00	00:15	Formula Winter Series Grid Procedure	00:00
10:00	10:35	00:30 + 1 Lap	Formula Winter Series Race 2	00:10
10:45	11:00	00:15	GT4 Winter Series Grid Procedure	00:00
11:00	11:30	00:30	GT4 Winter Series Race 2	00:10
11:40	11:55	00:15	GT Winter Series Grid Procedure	00:00
11:55	12:25	00:30	GT Winter Series Race 2	00:10
12:35	12:50	00:15	Prototype Winter Series Grid Procedure	00:00
12:50	13:45	00:50 + 1 Lap	Prototype Winter Series Race 2	00:10
13:55	14:10	00:15	Eurocup 3 Grid Procedure	00:00
14:10	14:45	00:30 + 1 Lap	Eurocup 3 Race 2	00:10
14:55	15:10	00:15	Formula Winter Series Grid Procedure	00:00
15:10	15:45	00:30 + 1 Lap	Formula Winter Series Race 3	00:10
15:55	16:10	00:15	GT4 Winter Series Grid Procedure	00:00
16:10	17:10	01:00	GT4 Winter Series Race 3	00:10
17:20	17:35	00:15	GT Winter Series Grid Procedure	00:00
17:35	18:30	00:55	GT Winter Series Race 3	

Pit boxes and Paddock clean and empty.

Do not leave tyres or barrels in the boxes or the paddock. Disposal costs will be invoiced.

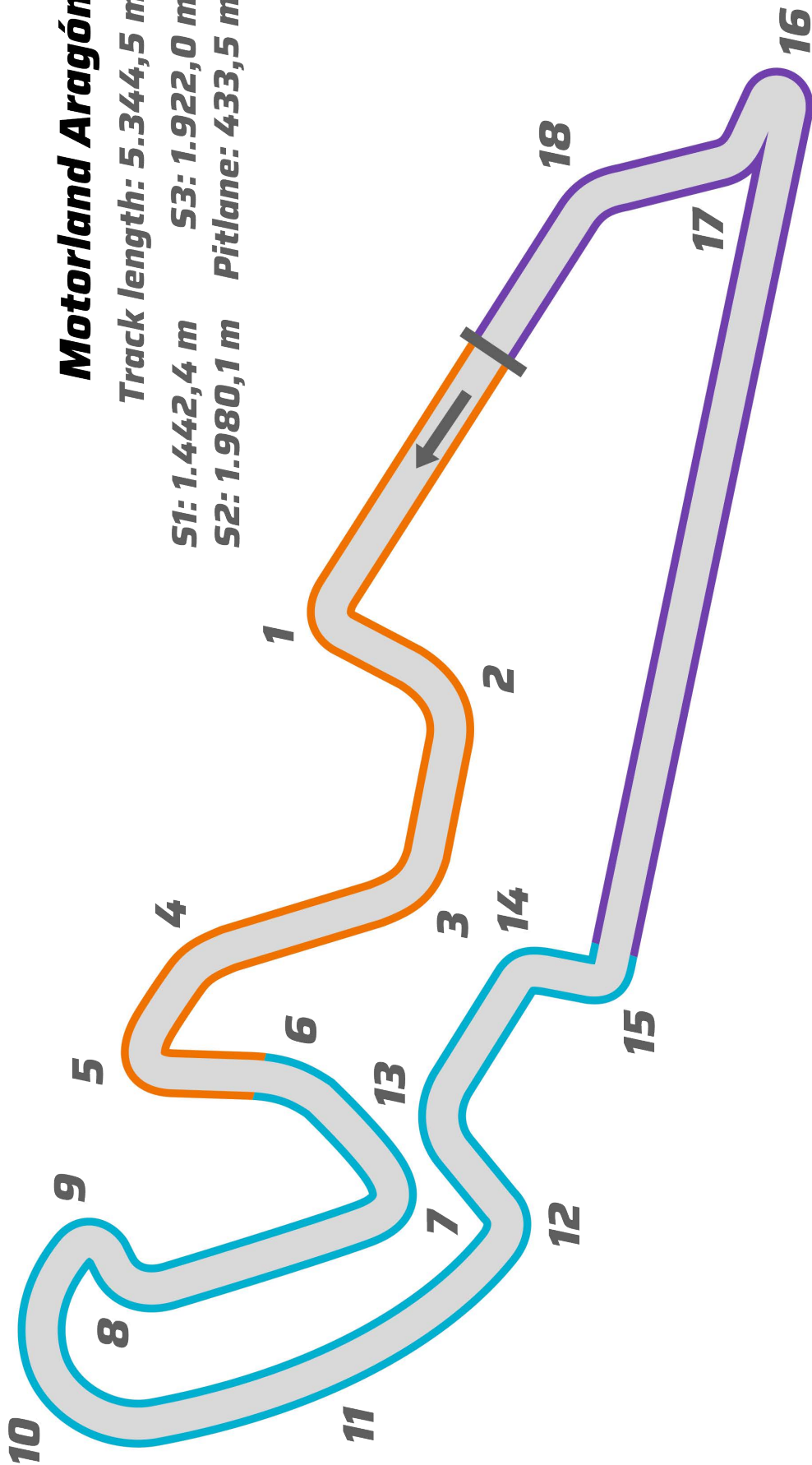
## TRACK LAYOUT

### Motorland Aragón

Track length: 5.344,5 m

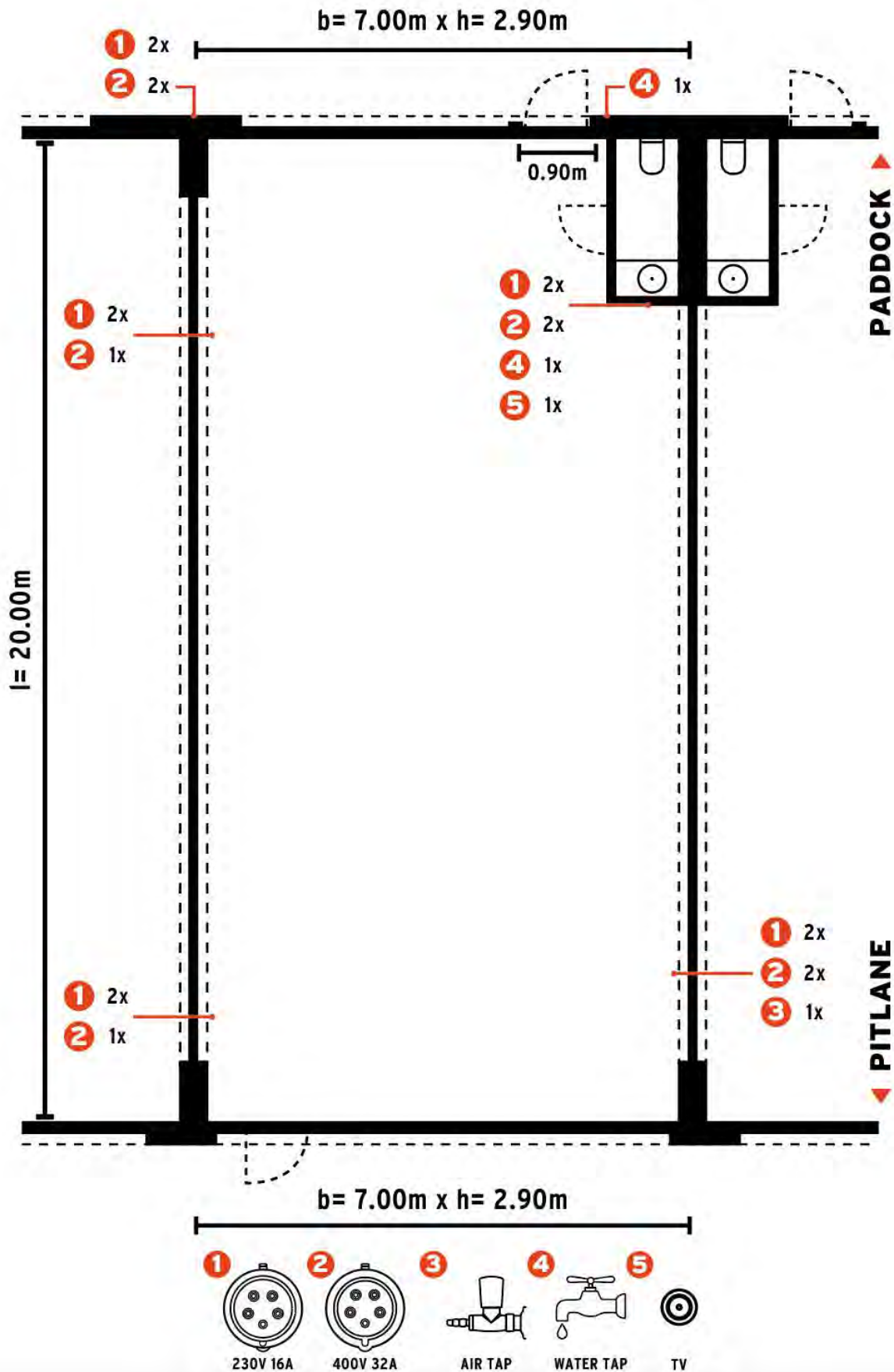
S1: 1.442,4 m S3: 1.922,0 m

S2: 1.980,1 m Pitlane: 433,5 m

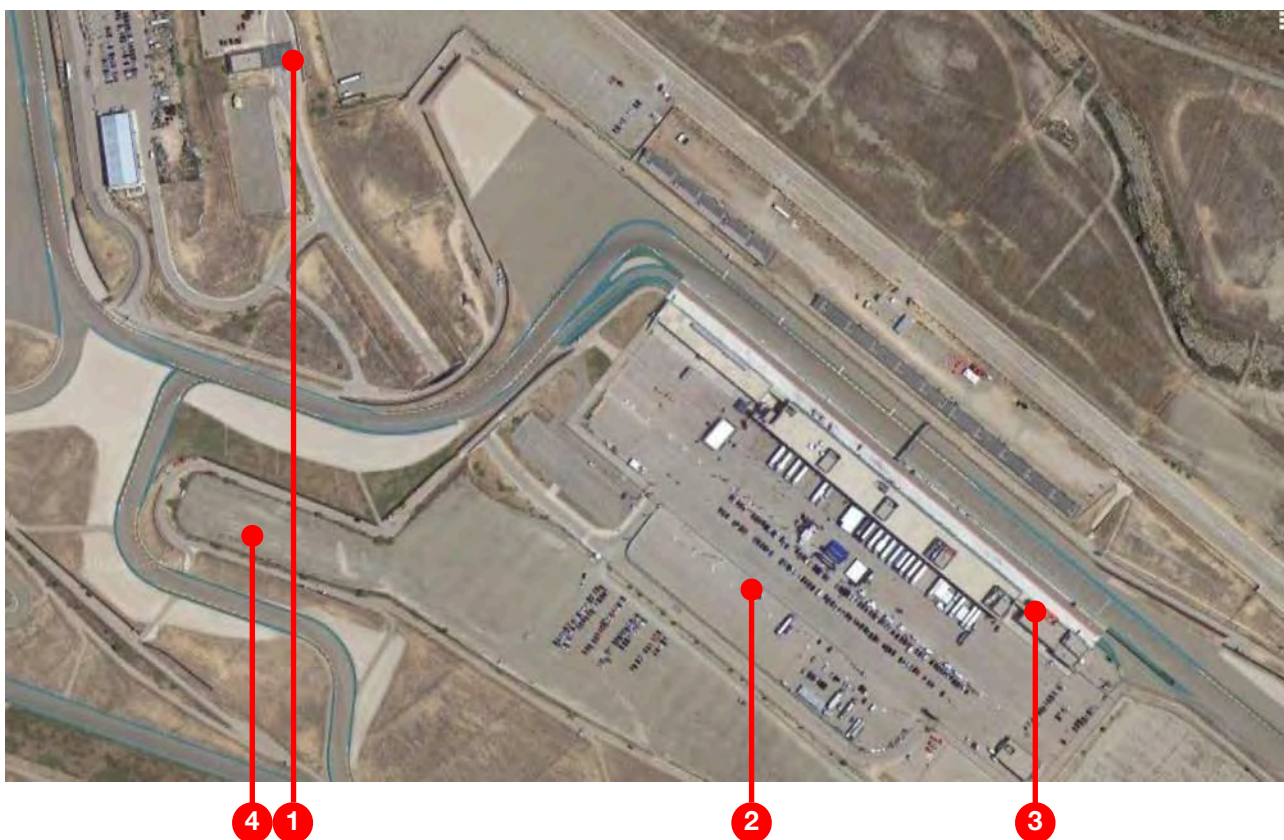




**PIT BOX**



**FACILITY MAP**



**Paddock Map Legend**

SUBJECT	LOCATION	HOW TO ACCESS
1 Paddock Entrance	-	THROUGH ENTRANCE GATE
2 TEAM PARKING	BEHIND THE PADDOCK - NOT INSIDE PADDOCK	TEAM PARKING „MIRROR CARD“
3 EVENT ORGANISATION OFFICE (ACCREDITATION)	GROUND FLOOR OF THE GENERAL INFO BUILDING	ENTER BUILDING AND KEEP RIGHT
3 BRIEFING ROOM RACE CONTROL STEWARDS OFFICE	1st - 2nd FLOOR IN CONTROL TOWER	ENTER BUILDING AND KEEP RIGHT
4 TRUCK PARKING	BEHIND PARKING INSIDE CIRCUIT'S PREMISES	FILL OUT TRUCK PARKING FORM

**RELEVANT CONTACT PERSONS**

**Stefan Lehner**  
Organisation

Phone: +49 173 525 26 21  
Mail: [stefan@winter-series.com](mailto:stefan@winter-series.com)



**Robin Selbach**  
Sales & Consulting

Phone: +49 172 72 20 111  
Mail: [robin@winter-series.com](mailto:robin@winter-series.com)

**Werner Aichinger**  
Race Director

Phone: +49 172 7111136  
Mail: [info@formel-koenig.de](mailto:info@formel-koenig.de)



**Mário Manso**  
Chief Steward

Phone: +351 912 235 482  
Mail: [mariomanso.cda@gmail.com](mailto:mariomanso.cda@gmail.com)

**Diogo Ferrão**  
Sporting Director

Phone: +351 917 515 665  
Mail: [diogo.ferrao@raceready.pt](mailto:diogo.ferrao@raceready.pt)

