

ORGANISATION - LOGISTICS

>> Pitbox allocation will be uploaded to our GEDLICH Racing mobile app <<

FOR DRIVERS

LIABILITY WAIVER

Sign the liability waiver if you participate in the tests on Thursday and Friday (**OBLIGATORY**)

LIABILITY WAIVER
SIGN ONLINE

FOR TEAMS

Paddock SPACE

For **GT4WS** teams - Fill out this form to request paddock space **or** if you are a GTWS/FWS team and need additional space in the paddock.

Paddock SPACE
ORDER FORM

CATERING

Catering and hospitality provided by MicFood in the Paddock, offering lunch and dinner. Fill out the catering order form to request catering.

CATERING ORDER FORM
BY MICFOOD

HOTEL SPECIALS

For special, personalized deals at hotels around the circuits, contact bastien@revolugo.com. For other hotel specials, click the button.

HOTEL SPECIALS
BY REVOLUGO

TRUCK PARKING

Request a parking spot for your truck before or after events. Most circuits offer secure parking for your truck(s) and cars. Fill out the form.

TRUCK PARKING
CIRCUITS / LOCATIONS

SPORTING INFO / DOCUMENTS



GENERAL

GENERAL DOCUMENTS
GT WINTER SERIES

DRIVER NOMINATION
TO BE HANDED IN UNTIL BRIEFING

LIVESTREAM
CLICK HERE TO GO TO CHANNEL

PHOTO GALLERY
CLICK HERE TO GO TO GALLERY

EVENT SPECIFIC

IMPORTANT DOCUMENTS
WINTER SERIES VALENCIA

GT3 BOP
GO TO THE GT3 SPECIFICATIONS

LIVETIMING
TAP HERE FOR LIVETIMING

TIMING RESULTS
TAP HERE FOR TIMING RESULTS

ORDER FORMS

MANDATORY



PANTA RACING FUEL

**MANDATORY
FOR GT3 CARS**



DATA LOGGER



PIRELLI TYRES



**MICHELIN
MICHELIN TYRES**



TIMING DATA STREAM



PFC BRAKES

TIME TABLE

WED 14 FEB: SET UP DAY

START	END	DURATION	SESSION	INT
09:30	21:00	11:30	GT4 Winter Series Paddock access	
09:30	21:00	11:30	Formula Winter Series pit box access	
18:00	22:00	04:00	GT Winter Series pit box access EARLIER ACCESS NOT POSSIBLE DUE TO TRACK ACTIVITY ON 14TH FEB.	
18:00	21:00	03:00	Track walk (unguided)	
18:00	21:00	03:00	Accreditation + Documentation for test days	

THU 15 FEB: TEST DAY 1

START	END	DURATION	SESSION	INT
07:30	-	-	Drivers accreditation	-
08:30	09:30	01:00	GT4 Winter Series Private Practice	00:05
09:35	10:35	01:00	GT Winter Series Private Practice	00:05
10:40	11:35	00:55	Formula Winter Series Collective Test	00:05
11:40	12:40	01:00	GT4 Winter Series Private Practice	00:05
12:45	13:45	01:00	GT Winter Series Private Practice	00:05
13:50	14:45	00:55	Formula Winter Series Collective Test	00:05
14:50	15:50	01:00	GT4 Winter Series Private Practice	00:05
15:55	16:55	01:00	GT Winter Series Private Practice	00:05
17:00	18:30	01:30	TCR Winter Series Private Practice	-

TIME TABLE

FRI 16 FEB: TECHNICAL SCRUTINEERING

MANDATORY

START	END	DURATION	SESSION	LOCATION
10:00	18:00	00:45	GT4 Winter Series	Technical Boxes
10:00	18:00	00:45	GT Winter Series	Technical Boxes
13:00	18:00	05:00	Formula Winter Series	Technical Boxes

DETAILED TIMESLOTS FOR EVERY CAR WILL BE POSTED IN THE APP

FRI 16 FEB: TEAM MANAGER BRIEFING

START	END	DURATION	SESSION	INT
11:00	11:30	00:30	Formula Winter Series	00:15
11:45	12:15	00:30	GT Winter Series	00:15
12:30	13:00	00:30	GT4 Winter Series	

FRI 16 FEB: DRIVERS BRIEFINGS

MANDATORY

START	END	DURATION	SESSION	INT
17:30	18:00	00:30	TCR Winter Series	00:15
18:15	18:45	00:30	GT4 Winter Series	00:15
19:00	19:30	00:30	Formula Winter Series	00:15
19:45	20:15	00:30	GT Winter Series	

TIME TABLE

FRI 16 FEB: ACCREDITATION + DOCS

MANDATORY

START	END	DURATION	SESSION	LOCATION
09:00	17:30	08:30	Formula Winter Series	GR Office Control Tower
09:00	17:30	08:30	GT Winter Series	GR Office Control Tower
09:00	17:30	08:30	GT4 Winter Series	GR Office Control Tower

FRI 16 FEB: TEST DAY 2

START	END	DURATION	SESSION	INT
08:30	09:25	00:55	TCR Winter Series Private Practice	00:05
09:30	10:25	00:55	Formula Winter Series Collective Test	00:05
10:30	11:10	00:40	GT4 Winter Series Private Practice	00:05
11:15	12:10	00:55	TCR Winter Series Private Practice	00:05
12:15	13:10	00:55	Formula Winter Series Collective Test	00:05
13:15	13:55	00:40	GT Winter Series Private Practice	00:05
14:00	14:40	00:40	GT4 Winter Series Private Practice	00:05
14:45	15:40	00:55	Formula Winter Series Collective Test	00:05
15:45	16:25	00:40	GT Winter Series Private Practice	00:05
16:30	17:00	00:30	GT4 Winter Series Private Practice	00:05
17:05	17:55	00:50	Formula Winter Series Collective Test	00:05
18:00	18:30	00:30	GT Winter Series Private Practice	-

TIME TABLE

SAT 17 FEB: RACE DAY 1

START	END	DURATION	SESSION	INT
09:00	09:25	00:25	GT4 Winter Series Free Practice	00:05
09:30	09:50	00:20	Formula Winter Series Qualifying 1	00:10
10:00	10:45	00:45	TCR Winter Series Free Practice	00:05
10:50	11:15	00:25	GT Winter Series Free Practice	00:10
11:25	11:40	00:15	GT4 Winter Series Qualifying 1	00:05
11:45	12:00	00:15	GT4 Winter Series Qualifying 2	00:10
12:10	12:30	00:20	TCR Winter Series Qualifying 1	00:05
12:35	12:45	00:10	TCR Winter Series Qualifying 2	00:10
12:55	13:10	00:15	GT Winter Series Qualifying 1	00:05
13:15	13:30	00:15	GT Winter Series Qualifying 2	00:00
13:30	14:20	00:50	Lunch Break - Pit walk (open garages)	00:00
14:20	14:35	00:15	Formula Winter Series Grid Procedure	00:00
14:35	15:05	00:30 + 1 Lap	Formula Winter Series Race 1	00:15
15:20	15:35	00:15	GT4 Winter Series Grid Procedure	00:00
15:35	16:05	00:30	GT4 Winter Series Race 1	00:15
16:20	16:35	00:15	TCR Winter Series Grid Procedure	00:00
16:35	17:00	00:25 + 1 Lap	TCR Winter Series Race 1	00:15
17:15	17:30	00:15	GT Winter Series Grid Procedure	00:00
17:30	18:00	00:30	GT Winter Series Race 1	-

TIME TABLE

SUN 18 FEB: RACE DAY 2

START	END	DURATION	SESSION	INT
09:00	09:20	00:20	Formula Winter Series Qualifying 2	00:15
09:35	09:50	00:15	GT4 Winter Series Grid Procedure	00:00
09:50	10:20	00:30	GT4 Winter Series Race 2	00:15
10:35	10:50	00:15	Formula Winter Series Grid Procedure	00:00
10:50	11:20	00:30 + 1 Lap	Formula Winter Series Race 2	00:15
11:35	11:50	00:15	GT Winter Series Grid Procedure	00:00
11:50	12:20	00:30	GT Winter Series Race 2	00:00
12:20	13:20	01:00	Lunch Break - pit walk (open garages)	00:00
13:20	13:35	00:15	TCR Winter Series Grid Procedure	00:00
13:35	14:00	00:25 + 1 Lap	TCR Winter Series Race 2	00:15
14:15	14:30	00:15	GT4 Winter Series Grid Procedure	00:00
14:30	15:30	01:00	GT4 Winter Series Race 3	00:15
15:45	16:00	00:15	Formula Winter Series Grid Procedure	00:00
16:00	16:30	00:30 + 1 Lap	Formula Winter Series Race 3	00:15
16:45	17:00	00:15	GT Winter Series Grid Procedure	00:00
17:00	17:55	00:55	GT Winter Series Race 3	-

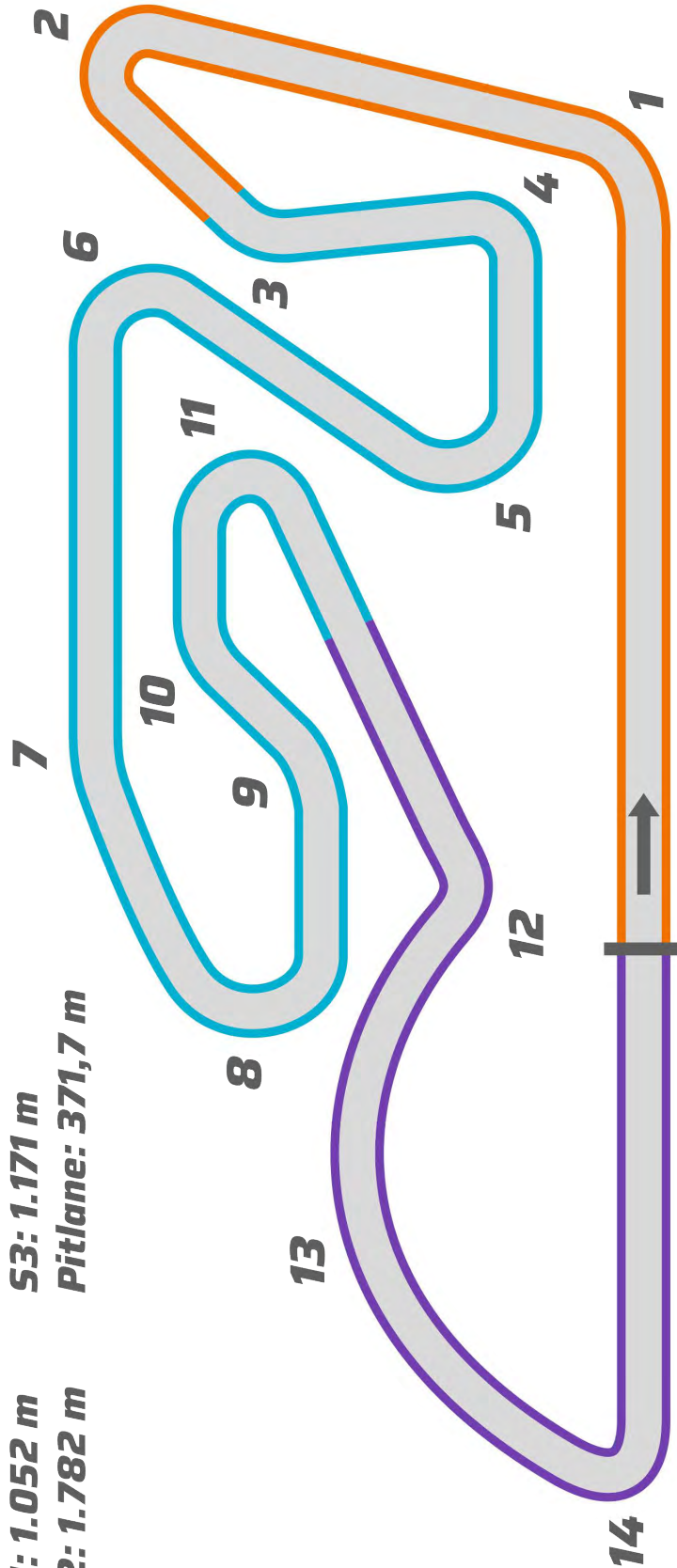
TRACK LAYOUT

Circuit Ricardo Tormo Valencia

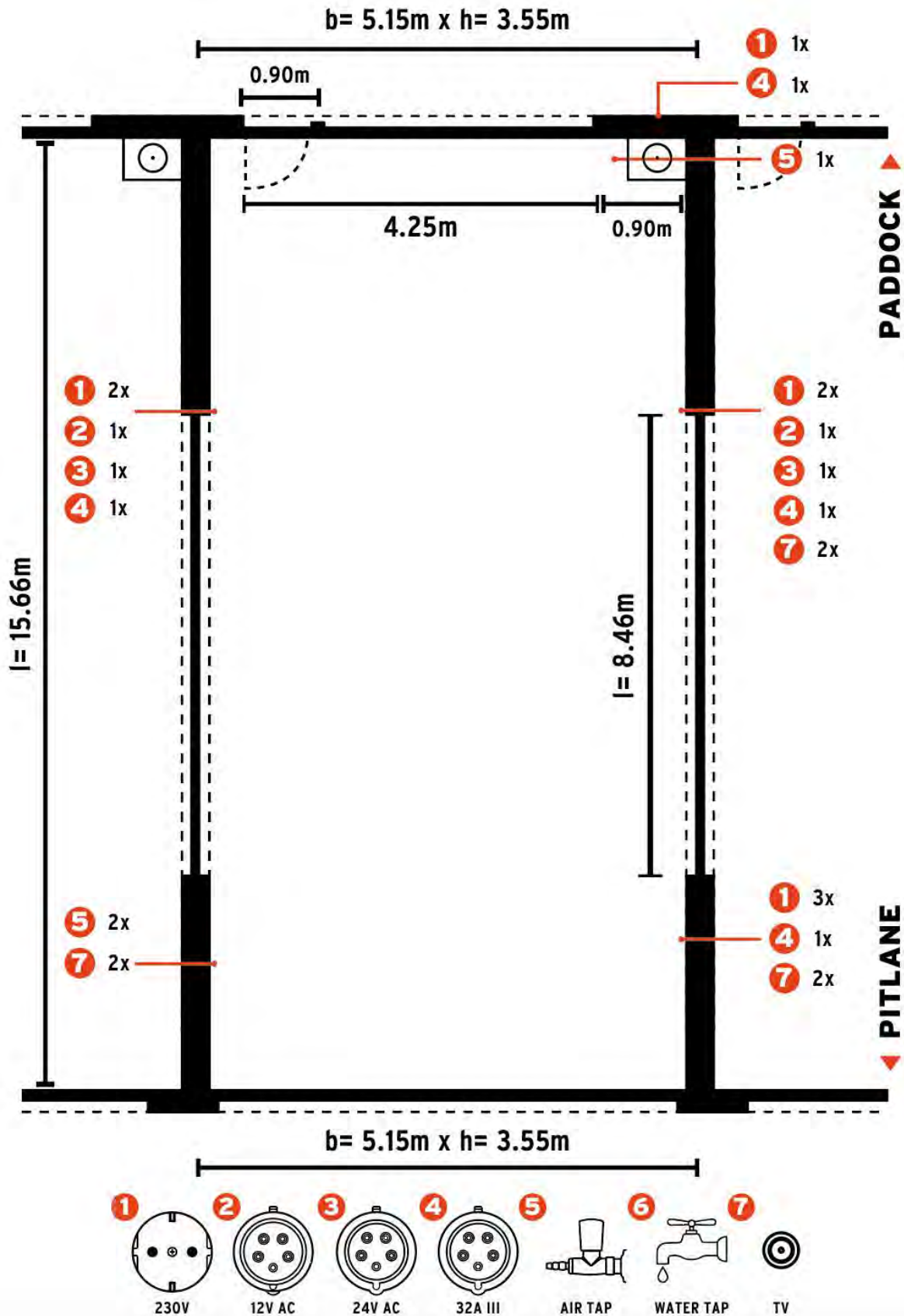
Track length: 4.005 m

S1: 1.052 m S3: 1.171 m

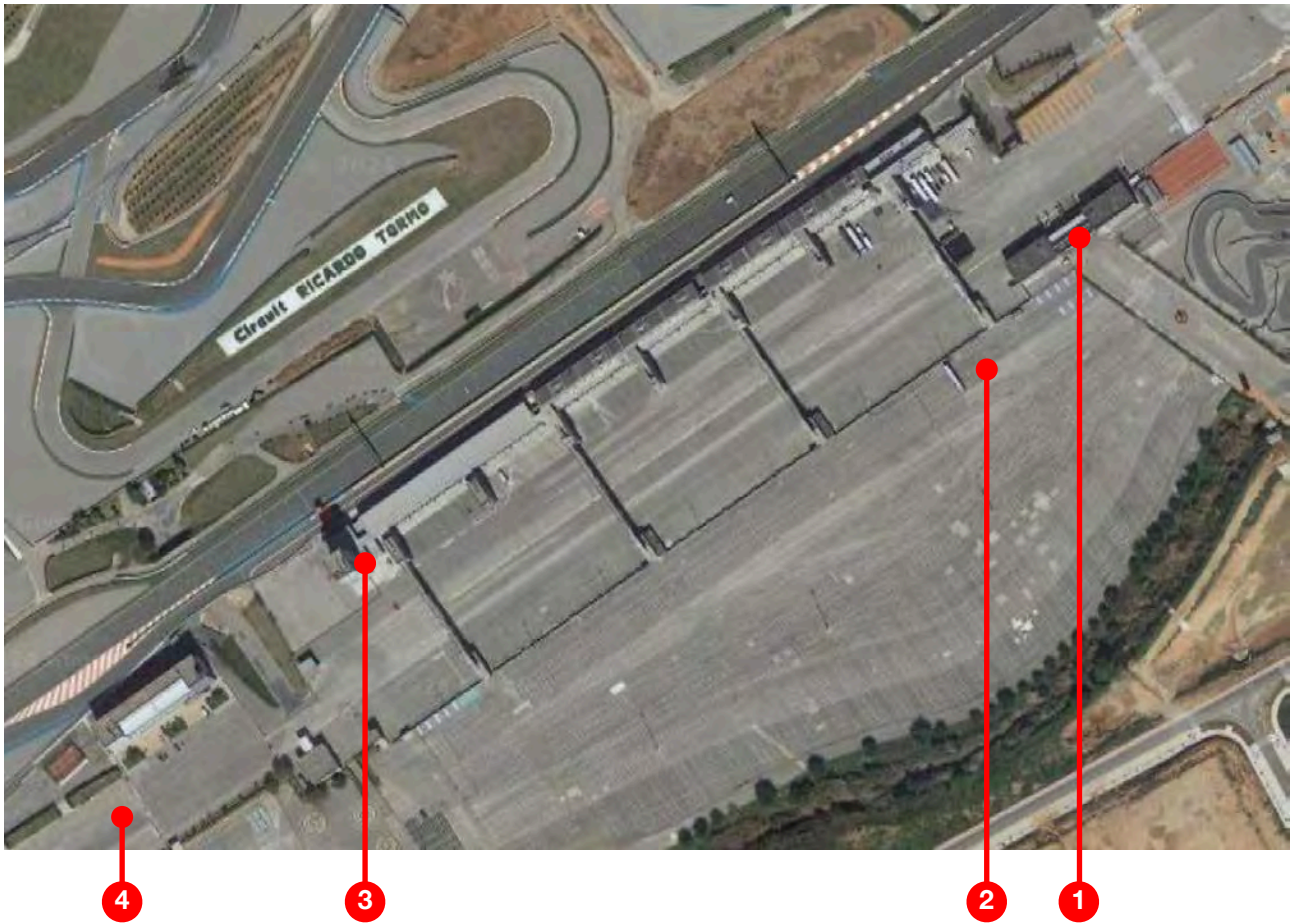
S2: 1.782 m Pitlane: 371,7 m



PIT BOX



FACILITY MAP



PADDOCK MAP LEGEND

SUBJECT	LOCATION	HOW TO ACCESS
1 Paddock Entrance	-	THROUGH ENTRANCE GATE
2 TEAM PARKING	IN THE FRONT OF THE ENTRANCE ON THE LEFT SIDE - NOT INSIDE PADDOCK	TEAM PARKING „MIRROR CARD“
3 EVENT ORGANISATION OFFICE (ACCREDITATION)	GROUND FLOOR OF THE CONTROL TOWER	ENTER TOWER AND KEEP RIGHT
3 BRIEFING ROOM RACE CONTROL STEWARDS OFFICE	1 st - 2 nd FLOOR IN CONTROL TOWER	ENTER BUILDING AND TAKE STAIRS TO THE LEFT
4 TRUCK PARKING	END OF PADDOCK	FILL OUT TRUCK PARKING FORM

RELEVANT CONTACT PERSONS

Stefan Lehner

Organisation

Phone: +49 173 525 26 21

Mail: stefan@winter-series.com



Robin Selbach

Sales & Consulting

Phone: +49 172 72 20 111

Mail: robin@winter-series.com



Werner Aichinger

Race Director

Phone: +49 172 7111136

Mail: info@formel-koenig.de



Mário Manso

Chief Steward

Phone: +351 912 235 482

Mail: mariomanso.cda@gmail.com



Diogo Ferrão

Sporting Director

Phone: +351 917 515 665

Mail: diogo.ferrao@raceready.pt

